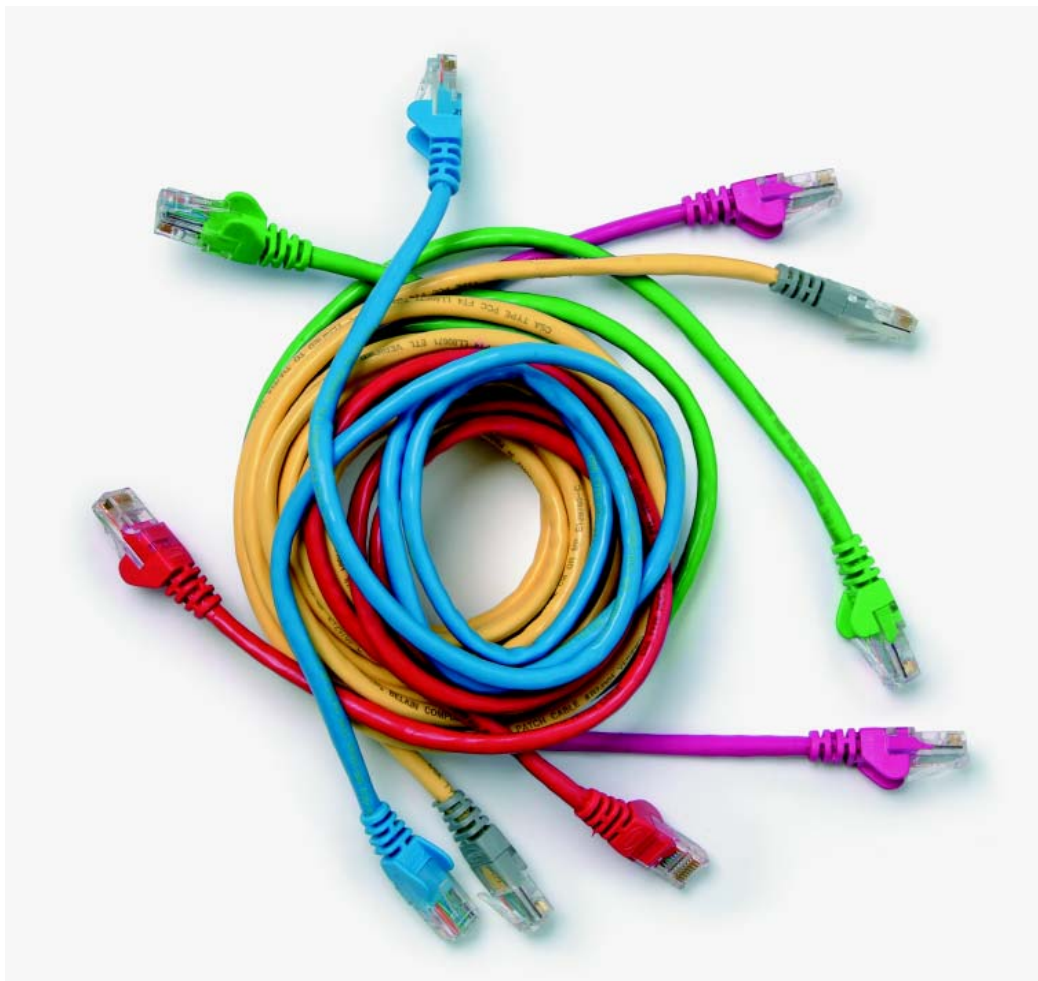


Level 2 Award in Communications Cabling (3667-02)

Assignment guide for candidates
500/8616/9



About City & Guilds

City & Guilds is the UK's leading provider of vocational qualifications, offering over 500 awards across a wide range of industries, and progressing from entry level to the highest levels of professional achievement. With over 8500 centres in 100 countries, City & Guilds is recognised by employers worldwide for providing qualifications that offer proof of the skills they need to get the job done.

City & Guilds Group

The City & Guilds Group includes City & Guilds, ILM (the Institute of Leadership & Management, which provides management qualifications, learning materials and membership services), City & Guilds NPTC (which offers land-based qualifications and membership services), City & Guilds HAB (the Hospitality Awarding Body), and City & Guilds Centre for Skills Development. City & Guilds also manages the Engineering Council Examinations on behalf of the Engineering Council.

Equal opportunities

City & Guilds fully supports the principle of equal opportunities and we are committed to satisfying this principle in all our activities and published material. A copy of our equal opportunities policy statement is available on our website.

Copyright

The content of this document is, unless otherwise indicated, © The City and Guilds of London Institute and may not be copied, reproduced or distributed without prior written consent.

However, approved City & Guilds centres and candidates studying for City & Guilds qualifications may photocopy this document free of charge and/or include a PDF version of it on centre intranets on the following conditions:

- centre staff may copy the material only for the purpose of teaching candidates working towards a City & Guilds qualification, or for internal administration purposes
- candidates may copy the material only for their own use when working towards a City & Guilds qualification

The *Standard Copying Conditions* (which can be found on our website) also apply.

Please note: National Occupational Standards are not © The City and Guilds of London Institute. Please check the conditions upon which they may be copied with the relevant Sector Skills Council.

Publications

City & Guilds publications are available from our website or from our Publications Sales department, using the contact details shown below.

Every effort has been made to ensure that the information contained in this publication is true and correct at the time of going to press. However, City & Guilds' products and services are subject to continuous development and improvement and the right is reserved to change products and services from time to time. City & Guilds cannot accept liability for loss or damage arising from the use of information in this publication.

City & Guilds

1 Giltspur Street

London EC1A 9DD

T +44 (0)844 543 0000

F +44 (0)20 7294 2413

www.cityandguilds.com

centresupport@cityandguilds.com

Level 2 Award in Communications Cabling (3667-02)

Assignment guide for candidates



www.cityandguilds.com
June 2010
Version 1

This page is intentionally blank

Contents

Unit 202	Fibre optic cabling in an internal environment	5
Unit 203	Fibre optic cabling in an external environment	8
Unit 204	Copper cabling in an internal environment	11

This page is intentionally blank

Unit 202 Fibre optic cabling in an internal environment

Assignment number 3667-02-202

Assignment guide for candidates

Version 1

Unit 202 Fibre optic cabling in an internal environment

Assignment number 3667-02-202

You are advised to read all instructions carefully before starting work. Check with your assessor, if necessary, to ensure that you have fully understood the process.

You must, at all times, observe all relevant health and safety precautions.

You should be aware of the manufacturer's calibration requirements. Please note that test equipment may need a user reference prior to use.

You may use any of the tools, materials and equipment provided.

There is a time limit of four hours for this assignment.

Introduction

This assignment is broken down into three parts.

Task A requires you to interpret installation plans, and identify cables and equipment in accordance with the plans.

Task B requires you to prepare fibre optic cable for termination and to assemble a fibre optic link.

Task C requires you to operate test equipment, test a fibre optic link, interpret and record test results, and rectify faults.

Task A

You are required to interpret the installation plan provided by your assessor and identify the correct cables and connectors to be used. You must ensure that at least two different termination methods are used, one of which must be pot and polish.

Task B

You are required to install a fibre optic link to meet the requirements specified in the installation plan.

After terminating the fibre with connectors, and before starting Task C, check with your assessor. Your assessor will assess the quality of the end faces before allowing you to complete Task C.

Task C

You are required to test and accurately record test results as follows:

- calculate a loss budget for the fibre optic link
- test fibre continuity using a visible light source
- identify fibre breaks using a visible fault locator
- measure the link loss using appropriate equipment
- compare the test results with the calculated loss budget to determine if the link performance is acceptable
- demonstrate link performance testing using OTDR techniques.

Test results should be recorded.

- **At the conclusion of this assignment, hand all paperwork to your assessor.**
- **Ensure that your name and enrolment number are on all documentation.**

Unit 203 Fibre optic cabling in an external environment

Assignment number 3667-02-203

Assignment guide for candidates

Version 1

Unit 203 Fibre optic cabling in an external environment

Assignment number 3667-02-203

You are advised to read all instructions carefully before starting work. Check with your assessor, if necessary, to ensure that you have fully understood the process.

You must, at all times, observe all relevant health and safety precautions.

You should be aware of the manufacturer's calibration requirements. Please note that test equipment may need a user reference prior to use.

You may use any of the tools, materials and equipment provided.

There is a time limit of eight hours for this assignment.

Introduction

This assignment is broken down into three parts.

Task A requires you to interpret installation plans, and identify cables and equipment in accordance with the plans.

Task B requires you to prepare external fibre optic cable for termination and to assemble a fibre optic link.

Task C requires you to operate test equipment, test a fibre optic link, interpret and record test results, and rectify faults.

Task A

You are required to interpret the installation plan provided by your assessor and identify the correct cables and pigtails to be used. Pigtail end faces should be inspected with a x 400 microscope before splicing.

Task B

You are required to install a fibre optic link to meet the requirements specified in the installation plan. A joint enclosure must be used in the link. You must terminate a minimum of two fibres per tube and use a minimum of eight splices over the link. You must seal the enclosure using methods suited to that enclosure.

Task C

You are required to test and accurately record test results as follows:

- calculate a loss budget for the fibre optic link
- test fibre continuity using a visible light source
- identify fibre breaks using a visible fault locator
- measure the link loss using appropriate equipment
- check the return loss of the link using an OTDR
- compare the test results with the calculated loss budget to determine if the link performance is acceptable
- demonstrate link performance testing using OTDR techniques.

All test results should be recorded.

- **At the conclusion of this assignment, hand all paperwork to your assessor.**
- **Ensure that your name and enrolment number are on all documentation.**

Unit 204 Copper cabling in an internal environment

Assignment number 3667-02-204

Assignment guide for candidates

Version 1

Unit 204 Copper cabling in an internal environment

Assignment number 3667-02-204

You are advised to read all instructions carefully before starting work. Check with your assessor, if necessary, to ensure that you have fully understood the process.

You must, at all times, observe all relevant health and safety precautions.

You should be aware of the manufacturer's calibration requirements. Please note that test equipment may need a user reference prior to use.

You may use any of the tools, materials and equipment provided.

There is a time limit of four hours for this assignment.

Introduction

This assignment is broken down into three parts.

Task A requires you to interpret installation plans and determine specifications, identify cables and connectors against requirements, and compare cable and connector characteristics.

Task B requires you to select termination hardware and cables, as required by the installation plan, and set up cable run, as required by the installation plan.

Task C requires you to operate test equipment, test a copper link, interpret and record test results, and rectify faults.

Task A

You are required to interpret the installation plan provided by your assessor and identify the correct cables and termination hardware to be used.

Task B

You are required to install cables to meet the requirements specified in the installation plan.

Task C

You are required to test and accurately record (save or print) test results as follows:

- test FTP or UTP copper cable permanent links
 - test a multi-core telephone cable installation
 - test installations to relevant performance standards.
-
- **At the conclusion of this assignment, hand all paperwork to your assessor.**
 - **Ensure that your name and enrolment number are on all documentation.**

This page is intentionally blank

**Published by City & Guilds
1 Giltspur Street
London
EC1A 9DD
T +44 (0)20 7294 2468
F +44 (0)20 7294 2400
www.cityandguilds.com**

**City & Guilds is a registered charity
established to promote education
and training**